

# AFINIA LABEL<sup>®</sup>

*On Demand, Full Colour, High Speed  
Digital Label Solutions*

## DLF-220 Series Digital Label Finishers



**DLF-220L**



**DLF-220**

LAMINATION  
(DLF-220L only)



KNIFE  
CUTTING



WASTE  
REMOVAL



SLITTING



FINISHED  
ROLLS

The **DLF-220** and **DLF-220L** are complete finishing solutions that unwind, laminate (DLF-220L only), knife cut, remove waste, slit, and rewind in one simple process. This equipment offers everything you need to professionally cut and finish short-run labels from your digital colour label printer.

#### SPEED UP PRODUCTION, WHILE LOWERING COST:

- Finishing speeds **up to 45% faster than the DLF-1000.**
- Accurately cut any shape up to 381mm in length on demand, without the added cost of dies.
- New generation optical sensor eliminates potential registration errors caused by dust or debris from cutting area.
- Easy to load and manoeuvre, saving time and money.

#### SIMPLIFY YOUR WORKFLOW:

- **Say goodbye to pre-cut labels.**
- Take control of your own label production, eliminating waiting times and stock holding.
- Eliminate hassle associated with producing full bleed labels.
- Laminate labels for added durability (DLF-220L only).



Core holder clutch



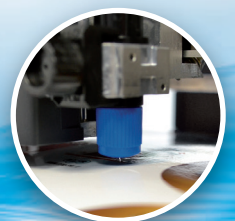
Laminating  
(DLF-220L only)



Tension arm



New optical sensor



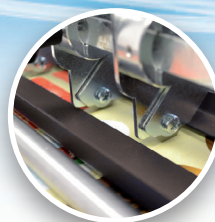
Knife cutting



Adjustable web clutch



Waste removal



Slitting



Accurate rewinding



Storage area

### Speed & Flexibility

Delivering production speeds up to 45% faster and a 20% longer cutting length than the DLF-I000, also with the added ability to adjust the cut position on the fly.

### Optical Sensing

Integrated camera detecting a single point black mark registration for each cutting layout. Resistant to dust and debris our latest sensor is optimised for speed and eliminates synchronisation issues.

### Adjustable Web Clutch

Produce perfectly wound finished rolls ready for application by using the adjustable web clutch, accommodating a wide variety of different label sizes.

### Accurate Web Handling

The use of ultrasonic sensors to ensure the media path is perfectly aligned through each process.

### Easy Align Slitting

The ability to move each slitting blade singularly or all of them in parallel is quick and easy.

### Blank Labels

Cut blank labels. Through the software, operators only need to set label step. No printed black-mark required on the media.

### Accessibility

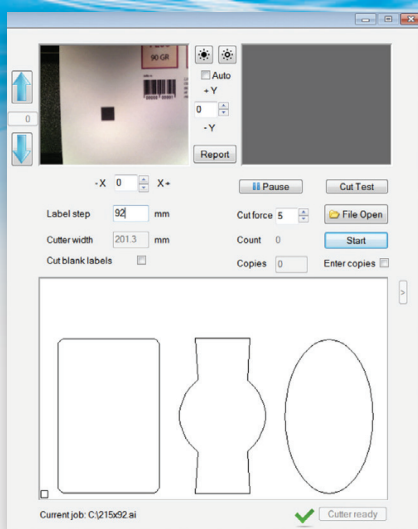
Modular design allowing easier access and resulting in shorter job set up times.

### Perforation Capabilities

It has never been easier to create labels with perforations.

### Easy to Move

Equipped with four wheels that allow for easy transport of the machine.



*Cutter management tool*

## DLF-220 Series Software

Using the optical camera sensor along with the i-mark software, the DLF-220 series will locate a 4mm black registration mark created using design packages Adobe Illustrator or CorelDraw. Once the black mark has been detected, it will be matched with the cut line in your design package, allowing you to make a test cut before beginning the job. Adjustments to the cut position or cut depth are quick and easy using the simple controls in the i-mark software.

## PLOTTER SPECIFICATIONS

Data interface	USB 2.0
Linear cut speed	Dependent on graphic 2 squares across 80x80 mm (3.15"x3.15") = 34 labels per min.
Programmable Cutting Force	20 gf - 300 gf in 31 steps (Max 300 gf)
Test cut function	Yes
Cut to registration	Single point registration black-mark (4 mm (0.16") square)
Cut ability	Both printed and unprinted media
Interface & Software	DLF-220 Software (Windows) cutter management tool. File creation via CorelDraw or Adobe Illustrator.
Power requirements	100-240 VAC, 240 watts

## OTHER SPECIFICATIONS

Part number	DLF-220	DLF-220L
Input/Output max. roll diameter	250 mm (9.84")	250 mm (9.84")
Minimum media width	110 mm (4.33")	110 mm (4.33")
Maximum media width	225 mm (8.86")	225 mm (8.86")
Maximum cutting width	200 mm (7.87")	200 mm (7.87")
Minimum slitting width	19 mm (0.75")	19 mm (0.75")
Number of slitting blades	up to 8	up to 8
Lamination module	NO	YES
Dimensions	L = 150 cm (59.05") H = 145 cm (57.06") W = 70 cm (27.56")	L = 200 cm (78.74") H = 145 cm (57.06") W = 70 cm (27.56")
Weight (estimated)	180 kg (396 lb)	235 kg (518 lb)
Roll core size	76 mm (3")	
Minimum / Maximum label length	10 mm (0.39") / 381 mm (15")	
Maximum media thickness	0.25 mm (10 mil)	
Maximum cut speed	600 mm/s (24 in/s) in all directions	
Warranty	One year parts and labour. Usage limitation may apply	

### AFINIA, a division of Microboards Technology

7 Harriott Drive  
Heathcote Industrial Estate  
Warwick  
CV34 6TJ  
United Kingdom

+44 (0)845 250 7949  
+44 (0)845 230 7900  
sales@afinia.co.uk  
www.afinialabel.co.uk

